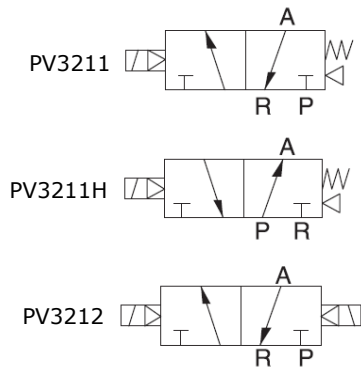


PV Valves Series (3/2 way)

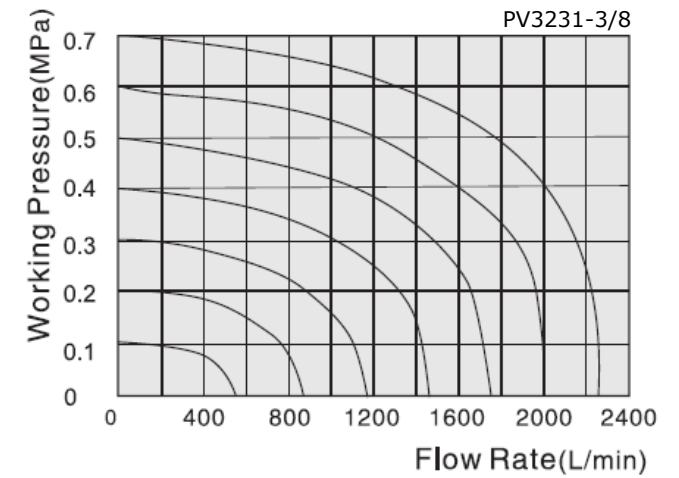
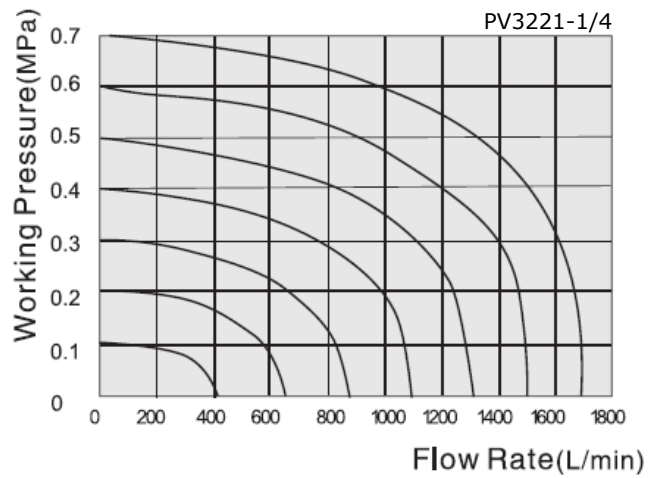
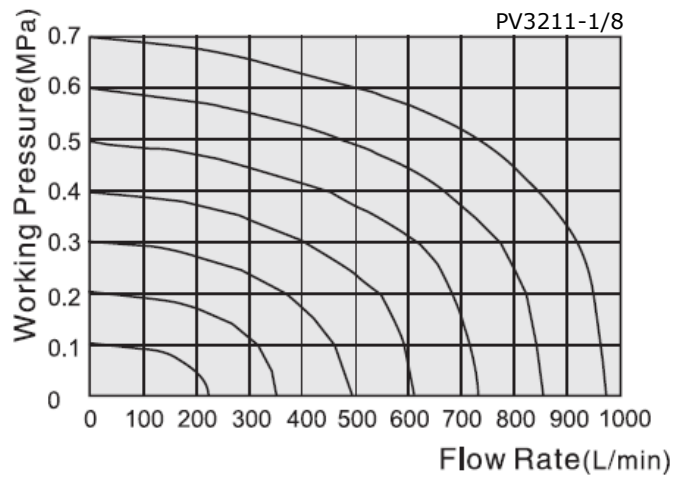


P	V	3	2	1	1	-	24	VDC	-	1 / 8
Series No. PV	Ports / Ways 3:2 ways	Positions 2 - Positions	Controls 1: Single control 2: Double control	Valve Body 1: 1 series 2: 2 series 3: 3 series 4: 4 series	Voltage 110 VAC 36 VAC 220 VAC 24 VAC 380 VAC 110 VDC 24 VDC 48 VDC 12 VDC 36 VDC	Port size M5: M5 1/8: 1/8" 1/4: 1/4" 3/8: 3/8" 1/2: 1/2"				

Specifications

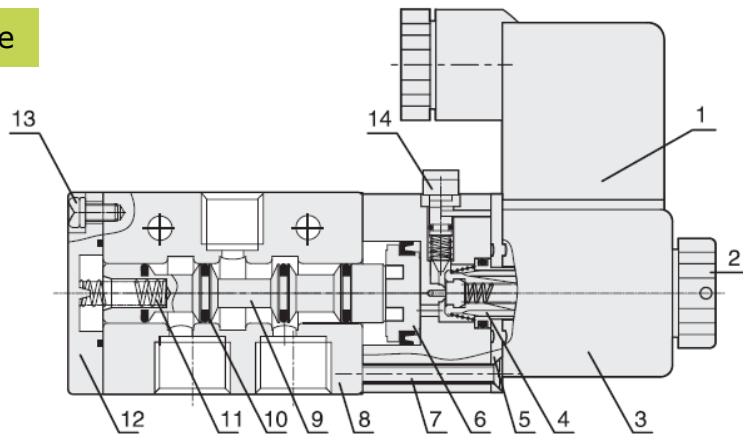
Model	PV3211-M5	PV3211-1/8	PV3221-1/8	PV3221-1/4	PV3231-1/4	PV3231-3/8	PV3241-3/8	PV3241-1/2
	PV3212-M5	PV3212-1/8	PV3222-1/8	PV3222-1/4	PV3232-1/4	PV3232-3/8	PV3242-3/8	PV3242-1/2
Port size	M5	G1/8	G1/8	G1/4	G1/4	G3/8	G3/8	G1/2
Sectional area (mm ²)	5.5 (CV=0.31)	12 (CV=0.67)	14 (CV=0.78)	16 (CV=0.89)	25 (CV=1.40)	30 (CV=1.68)	50 (CV=2.79)	50 (CV=2.79)
Working medium	Clean air (After 40 µm filtration)							
Acting type	Internal pilot type / External pilot type							
Reset type	Spring reset / Gas reset							
Lubrication	Not required							
Working pressure (Bar)	1.5 ~ 8							
Guaranteed pressure (Bar)	12							
Working temperature (°C)	-20 ~ 70 (No freezing)							
Voltage range	-15% ~ 10%							
Power consumption	DC:2.8W ; AC:3.0VA			DC:3.0W ; AC:4.0VA				
Insulation class	Class F							
Protective class	IP65 (DIN40050)							
Max. acting frequency	5/2: 5 Cycles/s; 5/3: 3 Cycles/s							
Activate time (s)	<0.05							
Weight (g)	PRV5211: 110		PRV5221: 209		PRV5231: 289		PRV5241: 528	
	PRV5212: 171		PRV5222: 314		PRV5232: 400		PRV5242: 638	
	PRV5312: 181		PRV5322: 357		PRV5332: 450		PRV5342: 727	

Flow Chart

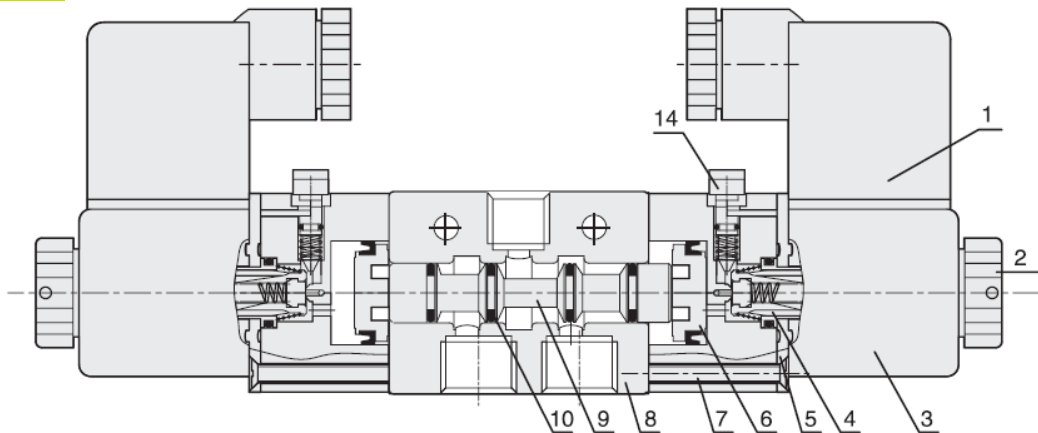


Internal Structure

Single Solenoid Valve



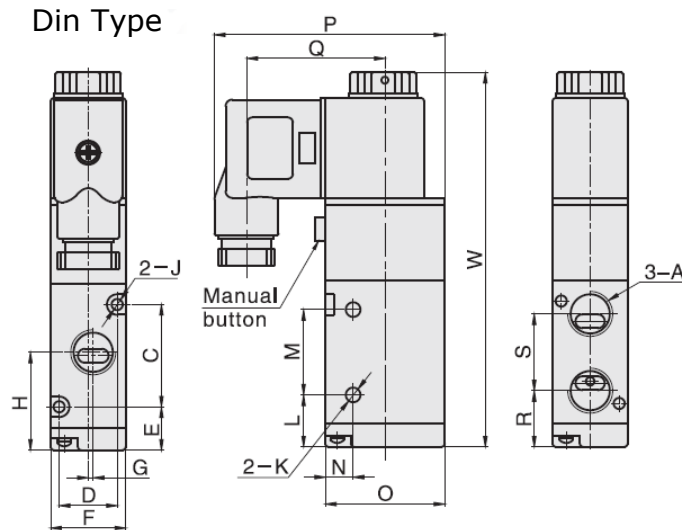
Double Solenoid Valve



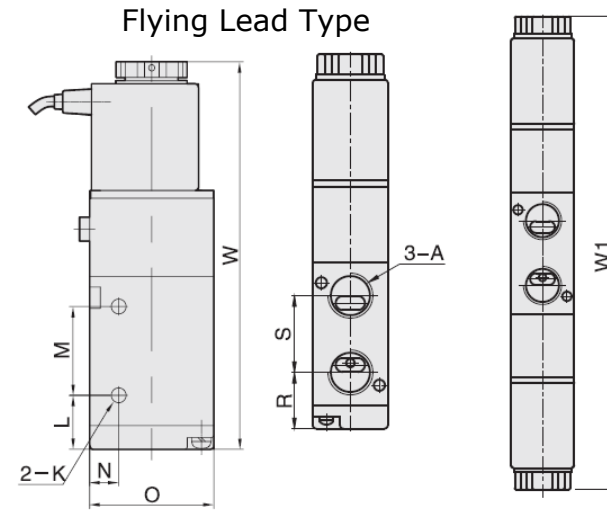
No.	Part name	Material
1	Connector	Engineered plastics
2	Nut	POM + Carbon steel
3	Coil	Cu
4	Pilot units	
5	Plate	Carbon steel
6	Piston	POM
7	Screw	Carbon steel
8	Valve body	Aluminum alloy
9	Spool	Aluminum alloy
10	O-ring	HNBR
11	Spring	Stainless steel
12	Rear cover	Zinc alloy
13	Screw	Carbon steel
14	Manual override	Engineered plastics

Main Dimension

Single Solenoid Valve



Double Solenoid Valve



(mm)

Model	A	C	D	E	F	G	H	J	K	L	M	N	O	P	Q	R	S	W	W1
PV3211-M5	M5	19	13	13.2	18	0	22.7	3.3	3.1	12.2	21	7.5	27	54.8	32.8	15.7	14	87.5	129.6
PV3211-1/8	G1/8	19	13	13.2	18	1.5	23.7	3.3	3.1	12.2	21	7.5	27	54.8	32.8	14.7	16	87.5	129.6
PV3221-1/8	G1/8	30	17	12.7	22	0	27.7	3.3	4.3	15.2	25	8.2	35	67.5	40.5	18.5	18.5	109.7	164
PV3221-1/4	G1/4	30	17	12.7	22	1.5	28.7	3.3	4.3	15.2	25	8.2	35	67.5	40.5	16.5	22.5	109.7	164
PV3231-1/4	G1/4	35	20	15	27	0	32.5	4.3	4.3	17.5	30	10.5	40	70	40.5	21.5	22	120.5	176
PV3231-3/8	G3/8	35	20	15	27	2	32.5	4.3	4.3	17.5	30	10.5	40	70	40.5	20.5	24	120.5	176
PV3241-3/8	G3/8	40.5	27	24.8	34	0	45	4.3	5.2	21	48	13.5	50	75	40.5	29.3	31.5	144	198
PV3241-1/2	G1/2	40.5	27	24.8	34	2	45	4.3	5.2	21	48	13.5	50	75	40.5	29.3	31.5	144	198