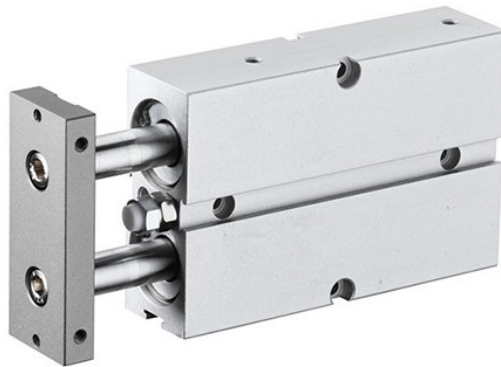
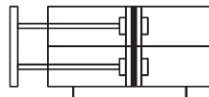


## PVEN Series Double Shaft Cylinder



PVEN-S



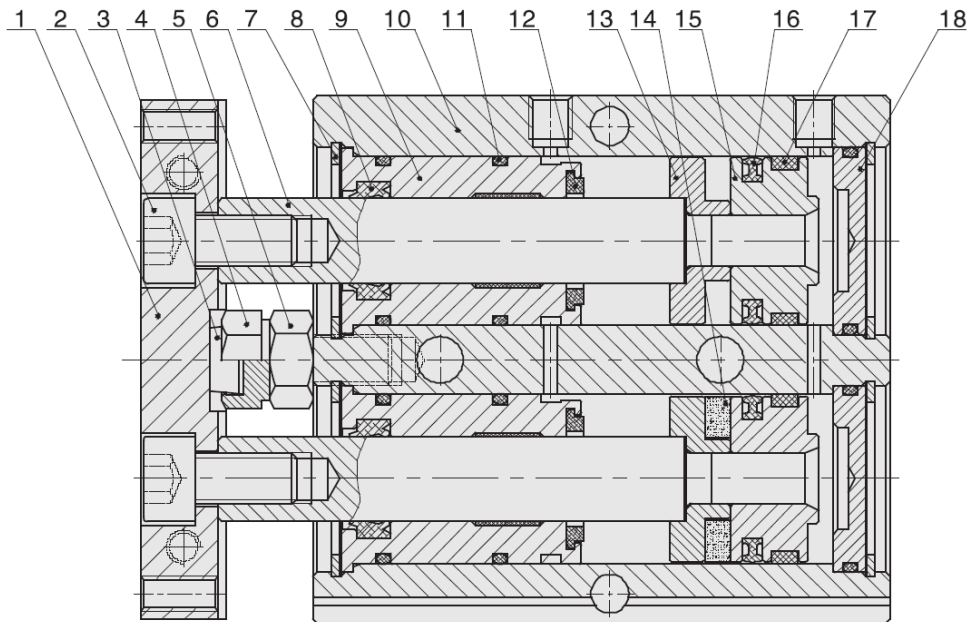
P	V	E	N	10	x	25	-	S
	<b>Series no.</b>			<b>Bore</b>		<b>Stroke</b>		<b>Magnet</b>
	PVEN			10		25		S: With magnet
				16		50		
				20		75		
				...		...		
				32				

## Specifications

Bore size (mm)	10	16	20	25	32
Acting type	Double acting				
Working medium	Clean air (After 40 µm filtration)				
Working pressure (bar)	1 ~ 10				
Guaranteed pressure (bar)	15				
Working temperature (°C)	-20 ~ 80 (No freezing)				
Speed range (mm/s)	30 ~ 500				
Adjusting stroke (mm)	-10 ~ 0				
Cushion type	Rubber cushion				
No-return precision	±0.4°				±0.3°
Port size	M5x0.8				G1/8

Bore	Standard Stroke (mm)	Max. Stroke (mm)
10	10 20 30 40 50 60 70 80 90 100	100
16 ~ 32	10 20 30 40 50 60 70 80 90 100 125 150 175 200	200

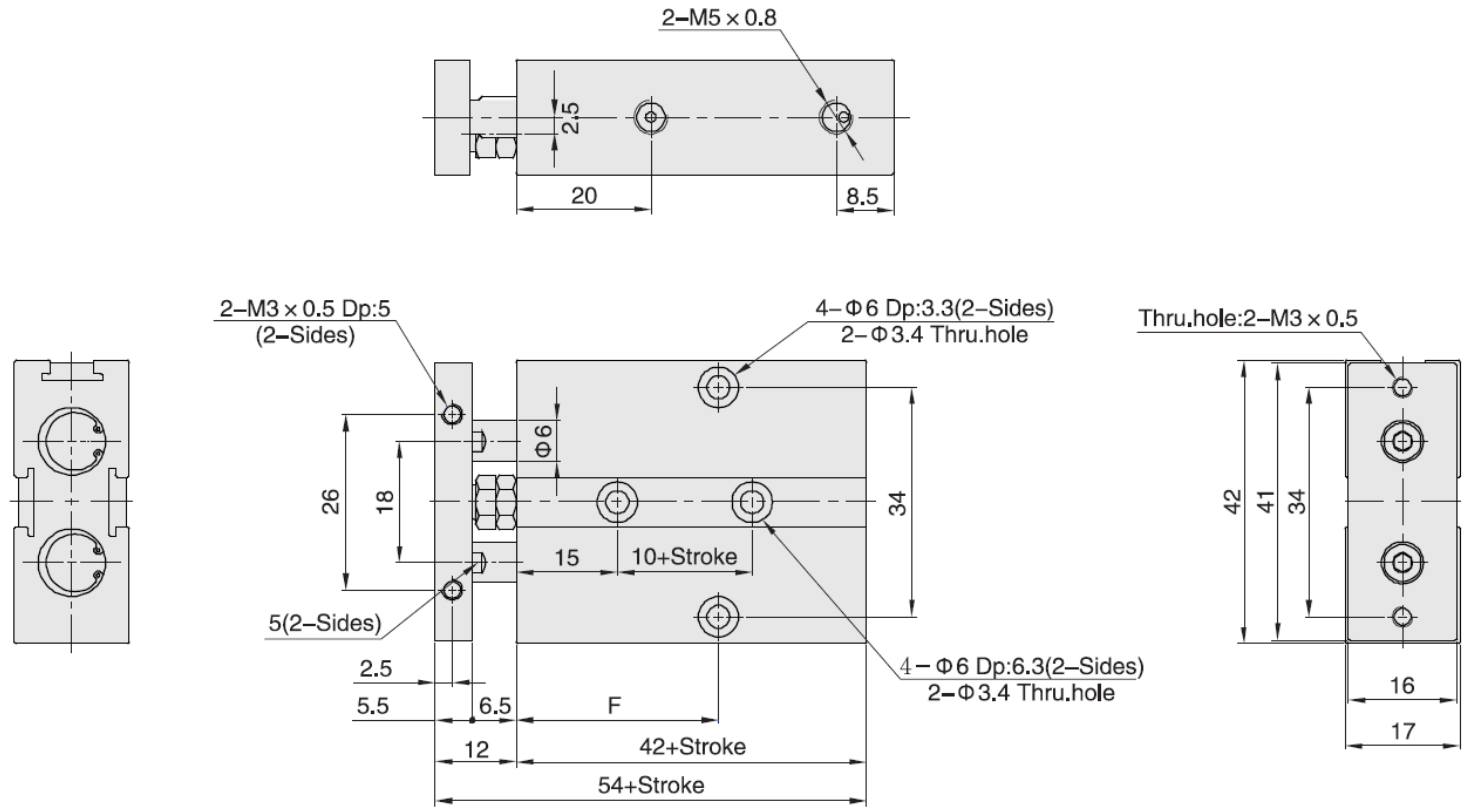
## Internal Structure



No.	Part name	Material
1	Fixing plate	Aluminum alloy
2	Nut	Carbon steel
3	Bumper	POM
4	Adjustable nut	Carbon steel
5	Screw	Carbon steel
6	Piston rod	S45C hard chrome carbon steel
7	C clip	Spring steel
8	Wiper seal	NBR
9	Head cover	Aluminum alloy
10	Body	Aluminum alloy
11	O-ring	NBR
12	Anti-bump cushion	NBR/TPU
13	Magnet holder	Aluminum alloy
14	Magnet	Plastic
15	Piston	Aluminum alloy
16	Piston seal	NBR
17	Wear ring	PTFE
18	Rear cover	Aluminum alloy

**Main Dimension**

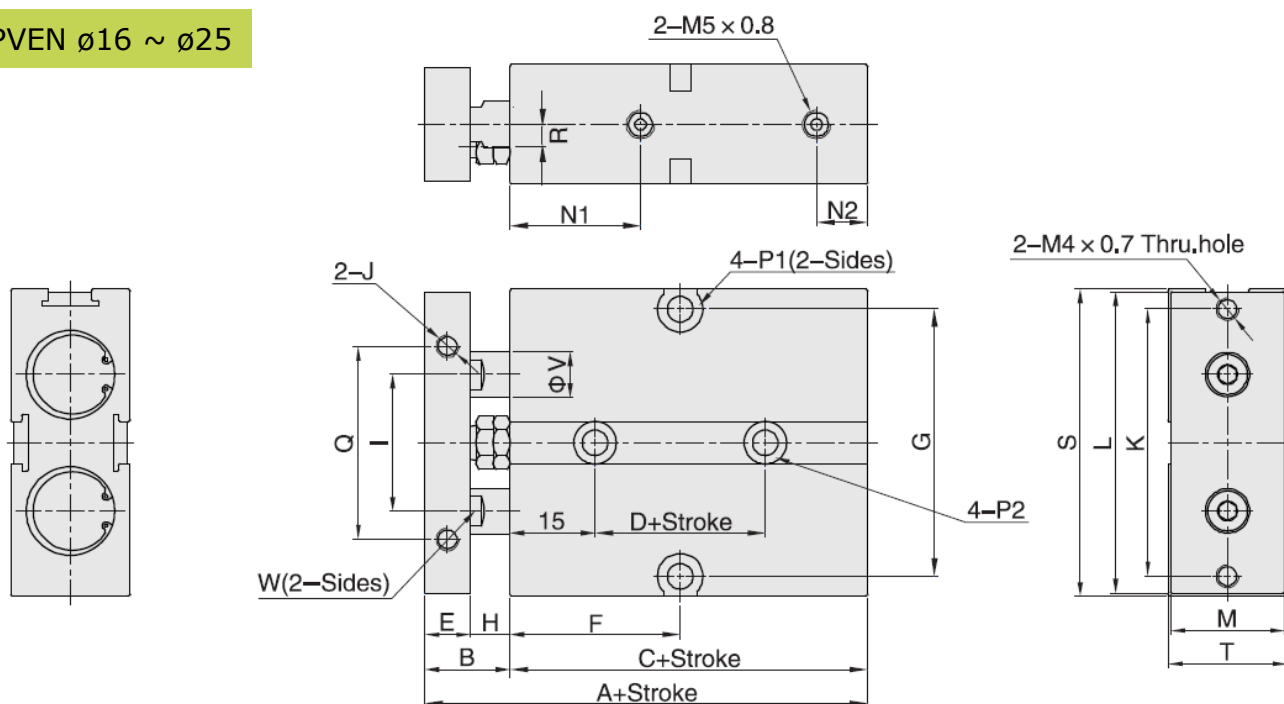
PVEN  $\phi 10$



(mm)

Bore	10	20	30	40	50	60	70	80	90	100
F	30	30	35	40	45	50	55	60	65	70

PVEN  $\varnothing 16 \sim \varnothing 25$

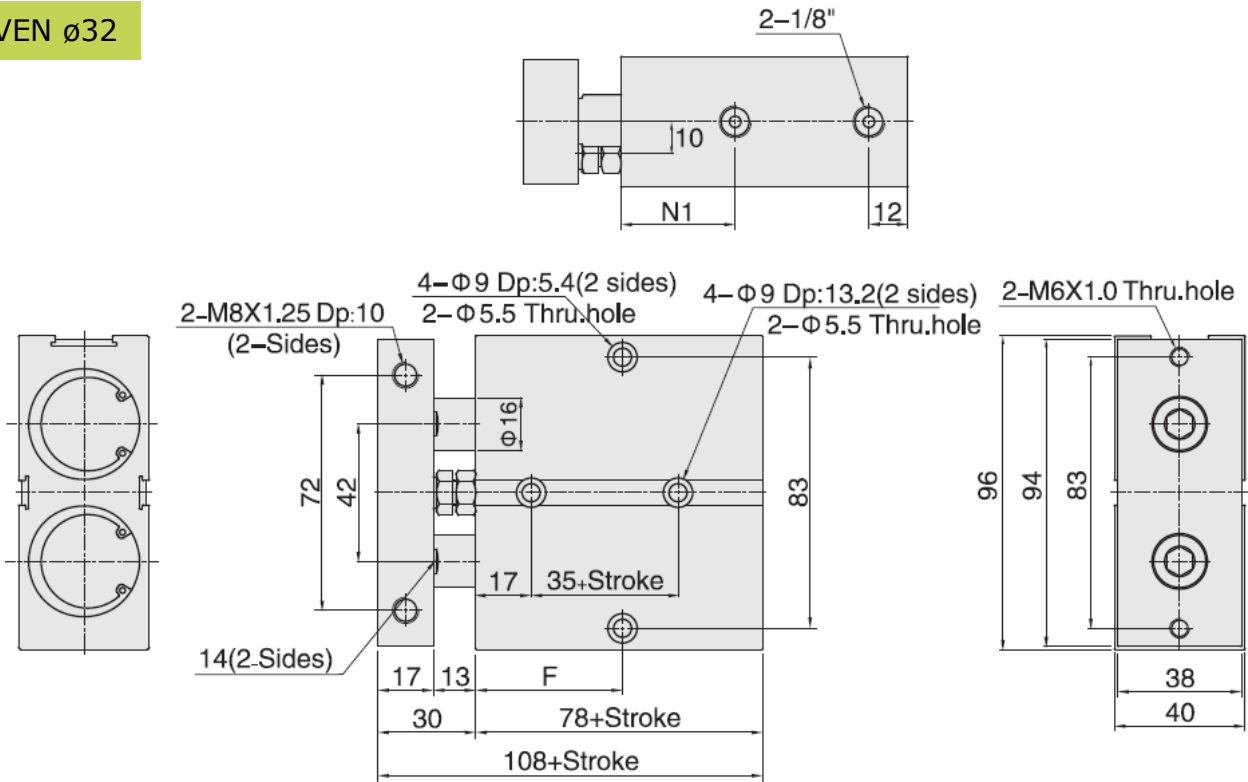


(mm)

Bore	A	B	C	D	E	F														G	H
						10	20	30	40	50	60	70	80	90	100	125	150	175	200		
16	68	15	53	20	8	30	35	40	45	50	55	60	65	70	75	87.5	100	112.5	125	47	7
20	78	20	58	20	10	35	35	40	45	50	55	60	65	70	75	87.5	100	112.5	125	55	10
25	81	19	62	30	10	40	40	45	50	55	60	65	70	75	80	92.5	105	117.5	130	66	9

Bore	I	K	J	L	M	N1	N2	P1	P2	Q	R	S	T	V	W
16	24	47	M4x0.7 Dp:5	53	20	23	9	$\varnothing 8$ Dp:4.5 ; Thru. hole: $\varnothing 4.5$	$\varnothing 7.5$ Dp:7.3 ; Thru. hole: $\varnothing 4.5$	34	3	54	21	8	6
20	28	55	M4x0.7 Dp:5	61	24	28	9	$\varnothing 8$ Dp:4.5 ; Thru. hole: $\varnothing 4.5$	$\varnothing 7.5$ Dp:7.5 ; Thru. hole: $\varnothing 4.5$	44	3.5	62	25	10	8
25	34	66	M4x0.7 Dp:6	72	29	33	9	$\varnothing 8$ Dp:4.5 ; Thru. hole: $\varnothing 4.5$	$\varnothing 7.5$ Dp:7.5 ; Thru. hole: $\varnothing 4.5$	56	6	73	30	12	10

PVEN  $\varnothing 32$



(mm)

Bore	10	20	30	40	50	60	70	80	90	100	125	150	175	200
N1	35	/	/	/	/	/	/	40	/	/	/	/	/	/
F	45	50	55	60	65	60	75	80	85	90	102.5	115	127.5	140

## Max Weight of Allowable Side-load

