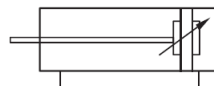


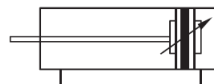
PVFBVC/PVFXBC Series ISO15552 Standard Cylinder



PVFBVC, PVFXBC

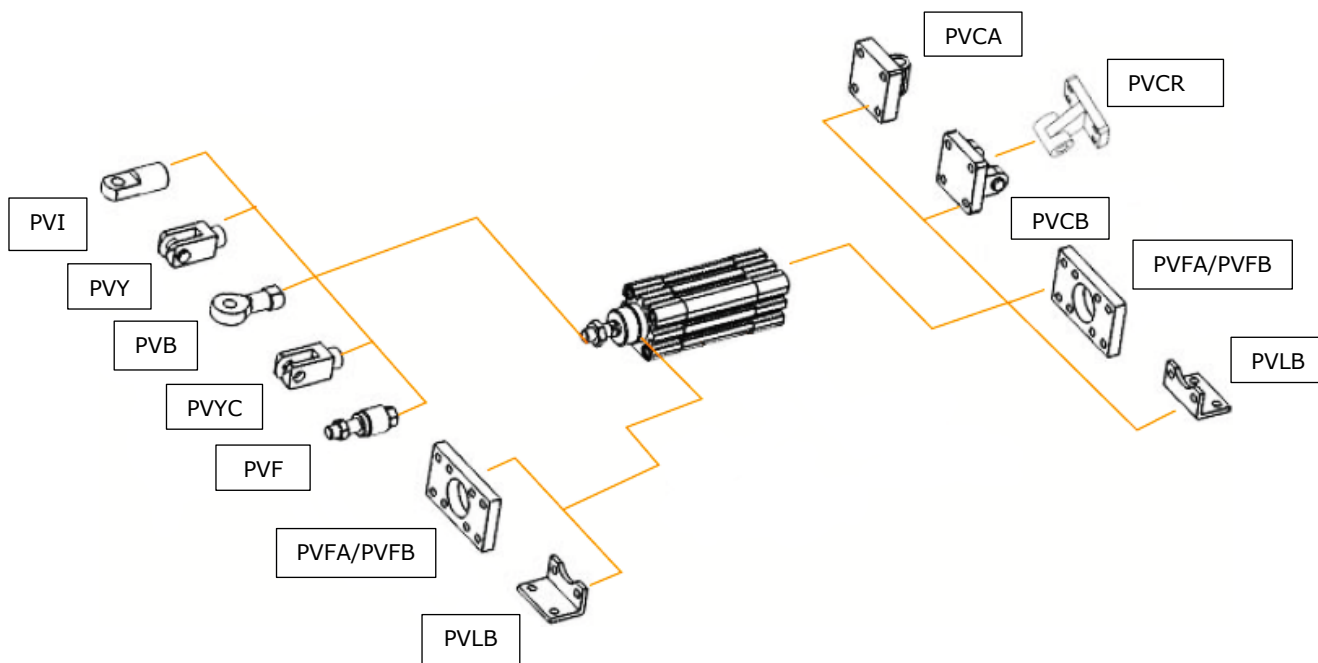


PVFBVC-S, PVFXBC-S



P	V	F	V	B	C		32	x	25	-		-	S
Series no.		Cushion		Type No.		Bore	Stroke	Adjustable stroke		Magnet			
PVFBVC PVFXBC		C: Air cushion		Blank: Basic type D: Double shaft J: Double shaft & adjustable stroke		32 40 50 63 80 100	25 50 75 ...	10 20 30 40 50 75 100		Blank: No magnet S: With magnet			

Optional Accessoires

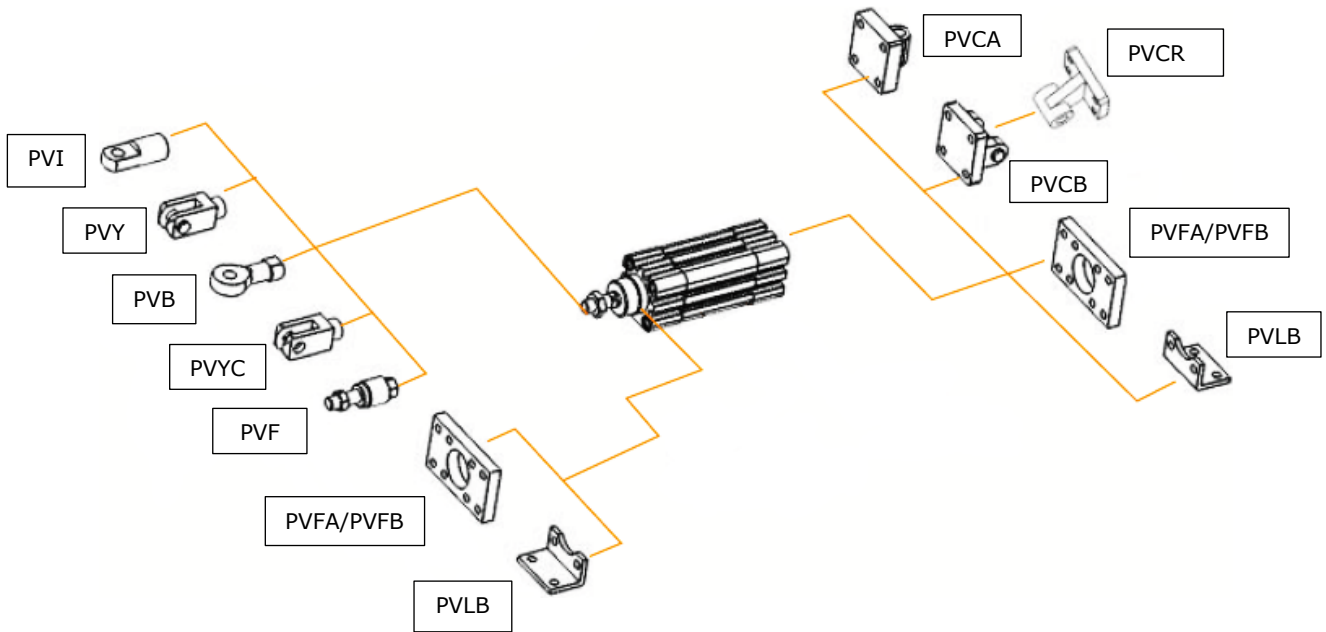


Specifications

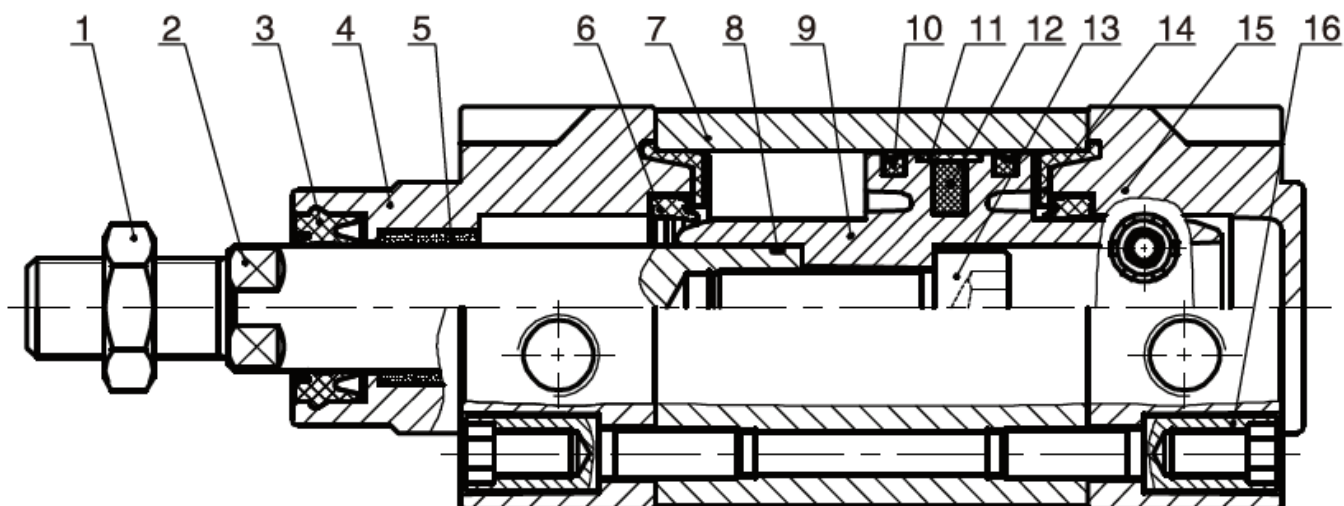
Bore size (mm)	16	20	25	32	40
Acting type	Single acting / Double acting				
Working medium	Clean air (After 40 µm filtration)				
Working pressure (bar)	2 ~ 7 (Single acting) 1 ~ 7 (Double acting)	2 ~ 10 (Single acting) / 1 ~ 10 (Double acting)			
Guaranteed pressure (bar)	15				
Working temperature (°C)	-20 ~ 80 (No freezing)				
Speed range (mm/s)	Single acting: 50 ~ 800 / Double acting: 30 ~ 800				
Cushion type	Rubber cushion / Air cushion				
Barrel material	Aluminum alloy				
Mounting type	PVLB PVFA PVSDB				
Port size	M5x0.8	G1/8			G1/4

Bore (mm)		Standard stroke (mm)	Max. stroke (mm)
Single acting	16 ~ 20	25 50 75 80 100 125 150 160 175 200 250 300	800
	25 ~ 40	25 50 75 80 100 125 150 160 175 200 250 300 350 400 450 500	1500
Double acting	16	25 50 75 100	100
	20 ~ 40	25 50 75 100 125 150	150

Optional Accessoires



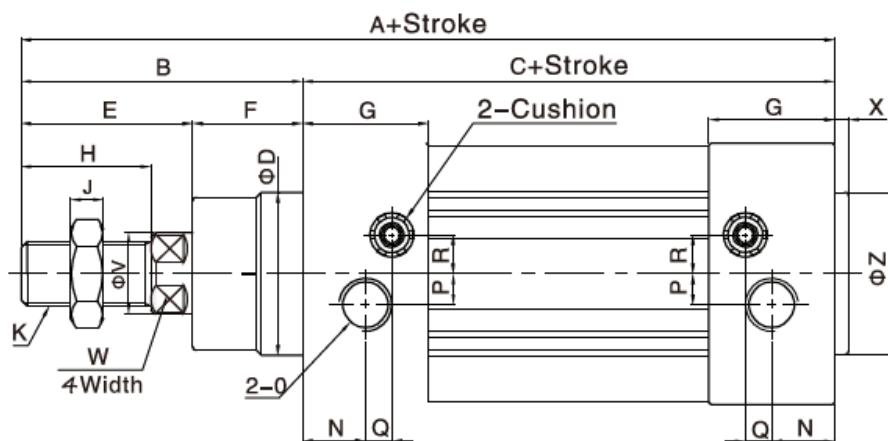
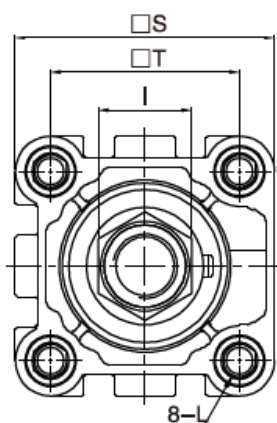
Internal Structure



No.	Part name	Material
1	Piston rod	S45C hard chrome carbon steel
2	Nut	Carbon steel
3	Piston rod seal	NBR
4	Nut	Carbon steel
5	Self lubricating bearing	Bronze powder
6	Head cover	Aluminum alloy
7	O-ring	NBR
8	Anti-bump cushion	TPU
9	O-ring	NBR
10	Piston seal	NBR
11	Piston	Aluminum alloy
12	Wear ring	PTFE
13	Magnet	Plastic
14	Barrel	Aluminum alloy
15	Hexagon screw	Carbon steel
16	Rear cover	Aluminum alloy

Main Dimension

PVFVB-C



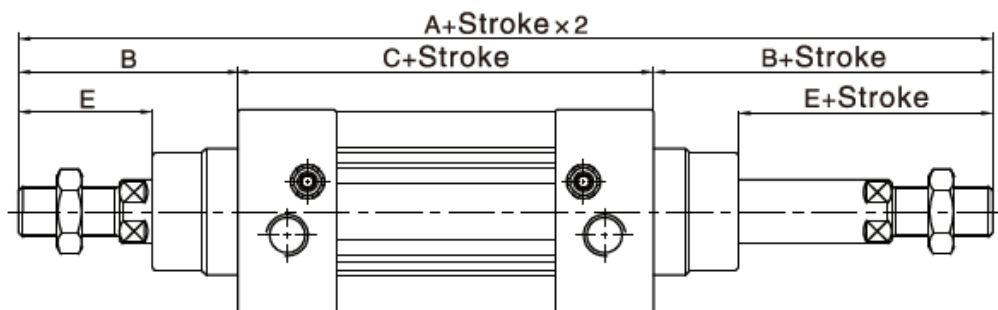
(mm)

Bore	A	B	C	D	E	F	G	H	I	J	K	L
32	142	48	94	30	29	19	27.5	22	17	6	M10x1.25	M6 ↓ 16
40	159	54	105	35	33	21	32	24	17	7	M12x1.25	M6 ↓ 16
50	175	69	106	40	42	27	31	32	23	8	M16x1.5	M8 ↓ 16
63	190	69	121	45	42	27	33	32	23	8	M16x1.5	M8 ↓ 16
80	214	86	128	45	53	33	33	40	26	10	M20x1.5	M10 ↓ 17
100	229	91	138	55	55	36	37	40	26	10	M20x1.5	M10 ↓ 17

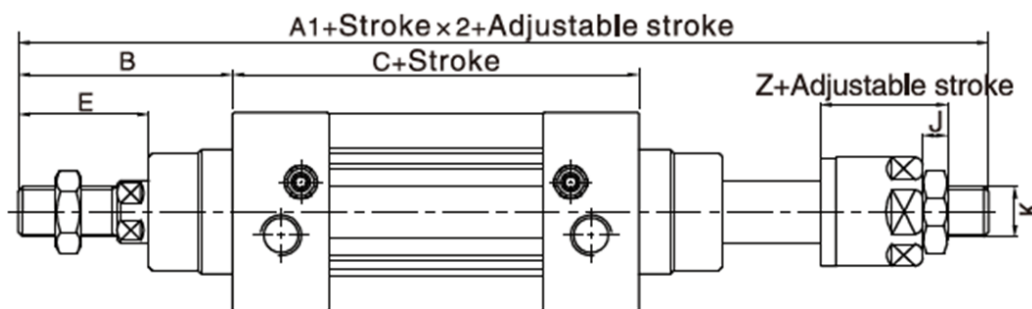
Bore	N	O	P	Q	R	S	T	V	W	X	Z
32	13	1/8"	5.5	6	6	46.5	32.5	12	10	3	30
40	17	1/4"	6	7.5	8.5	54	38	16	13	3.5	35
50	15.5	1/4"	7.5	6.5	9.5	64	46.5	20	17	3.5	40
63	16.5	3/8"	7.5	7.5	11.5	75	56.5	20	17	4	45
80	16.5	3/8"	8	8.5	12.5	93	72	25	22	4	45
100	19.5	1/2"	10	7	12	110	89	25	22	4	55

Note: With magnet and without magnet, the dimensions are the same.

PVFVBC-D



PVFVBC-J



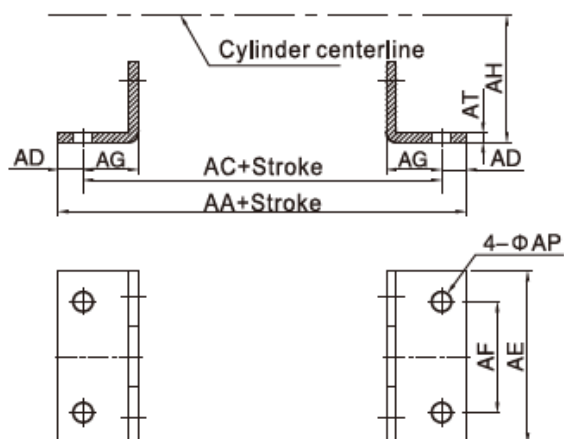
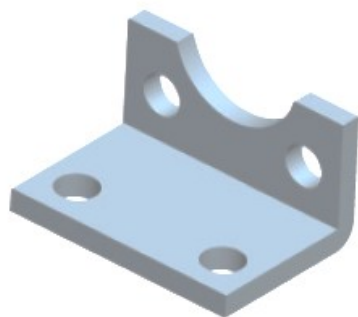
(mm)

Bore	A	A1	B	C	E	Z	J	K
32	190	188	48	94	29	27	6	M10x1.25
40	213	208	54	105	33	28	7	M12x1.25
50	244	233	69	106	42	31	8	M16x1.5
63	259	248	69	121	42	31	8	M16x1.5
80	300	286	86	128	53	39	10	M20x1.5
100	320	304	91	138	55	39	10	M20x1.5

- Note: 1. With magnet and without magnet, the dimensions are the same.
 2. Not marked dimension are the same as PVFVBC series.
 3. The dimensions of the PVFXBC series dimensions are the same as PVFVBC series.

Accessory Dimensions

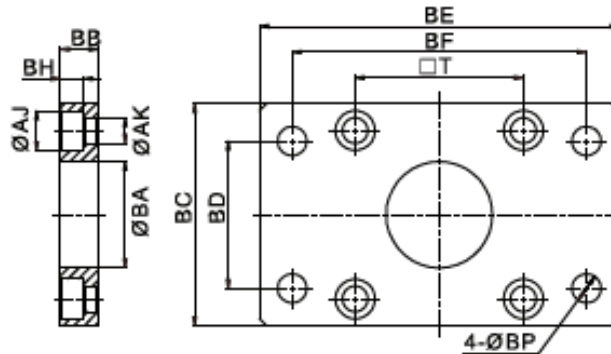
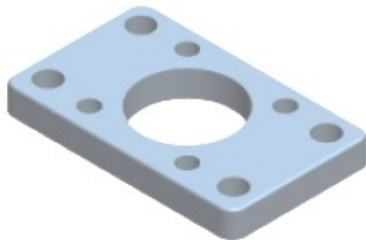
PVLB



(mm)

Model	AA	AC	AD	AE	AF	AG	AH	AP	AT
PVLB-PVVBC-32	158	142	8	47	32	24	32	7	4
PVLB-PVVBC-40	179	161	9	53	36	28	36	9	4
PVLB-PVVBC-50	190	170	10	65	45	32	45	9	5
PVLB-PVVBC-63	209	185	12	75	50	32	50	9	5
PVLB-PVVBC-80	248	210	19	95	63	41	63	12.5	6
PVLB-PVVBC-100	258	220	19	115	75	41	71	14.5	6

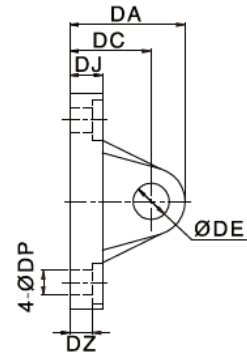
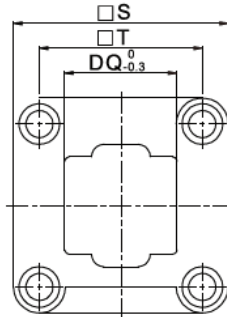
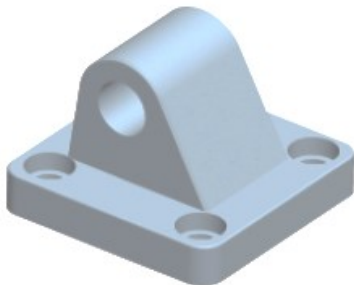
PVFA/FB



(mm)

Model	AJ	AK	BA	BB	BC	BD	BE	BF	BH	BP	T
PVFA-PVVBC-32	11	7	30.5	10	47	32	80	64	6	7	32.5
PVFA-PVVBC-40	11	7	35.5	10	53	36	90	72	6	9	38
PVFA-PVVBC-50	14	9	40.5	12	65	45	110	90	8	9	46.5
PVFA-PVVBC-63	14	9	45.5	12	75	50	125	100	8	9	56.5
PVFA-PVVBC-80	17	11	45.5	16	95	63	154	126	10	12.5	72
PVFA-PVVBC-100	17	11	55.5	16	115	75	186	150	10	14.5	89

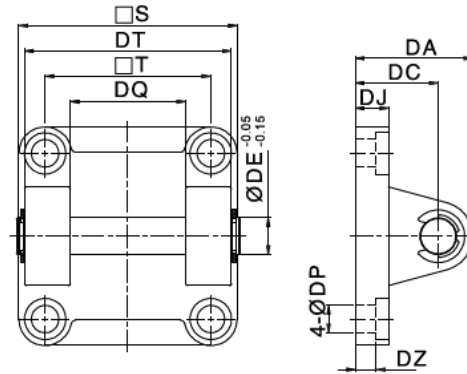
PVCA



(mm)

Model	DA	DC	DE	DJ	DP	DQ	DZ	S	T
PVCA-PVVBC-32	31	22	10	9.5	7	25.8	5.5	47	32.5
PVCA-PVVBC-40	37	25	12	9.5	7	27.8	5.5	53	38
PVCA-PVVBC-50	39	27	12	10.5	9	31.8	6.5	65	46.5
PVCA-PVVBC-63	47	32	16	10.5	9	39.7	6.5	75	56.5
PVCA-PVVBC-80	51	36	16	14.5	11	49.7	10	95	72
PVCA-PVVBC-100	61	41	20	14.5	11	59.7	10	115	89

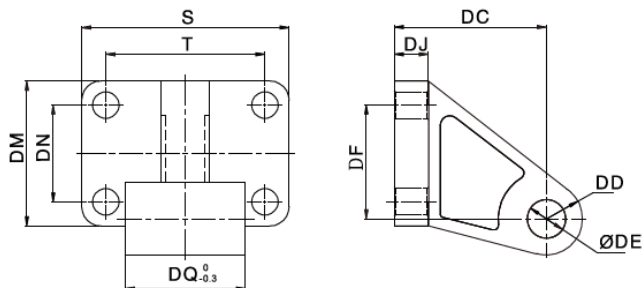
PVCB



(mm)

Model	DA	DC	DE	DJ	DP	DQ	DT	DZ	S	T
PVCB-PVVCB-32	31	22	10	9.5	7	26 ^{+0.52} ₀	45	5.5	47	32.5
PVCB-PVVCB-40	37	25	12	9.5	7	28 ^{+0.52} ₀	52	5.5	53	38
PVCB-PVVCB-50	39	27	12	10.5	9	32 ^{+0.62} ₀	60	6.5	65	46.5
PVCB-PVVCB-63	47	32	16	10.5	9	40 ^{+0.62} ₀	70	6.5	75	56.5
PVCB-PVVCB-80	51	36	16	14.5	11	50 ^{+0.62} ₀	90	10	95	72
PVCB-PVVCB-100	61	41	20	14.5	11	60 ^{+0.74} ₀	110	10	115	89

PVCR



(mm)

Model	DC	DD	DE	DF	DJ	DQ	DM	DN	S	T
PVCR-PVVBC-32	32	10	10	21	8	25.8	31	18	51	38
PVCR-PVVBC-40	36	11	12	24	10	27.8	35	22	54	41
PVCR-PVVBC-50	45	13	12	33	12	31.8	45	30	65	50
PVCR-PVVBC-63	50	15	16	37	12	39.7	50	35	67	52
PVCR-PVVBC-80	63	15	16	47	14	49.7	60	40	86	66
PVCR-PVVBC-100	71	19	20	55	15	59.7	70	50	96	76