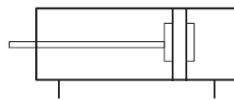


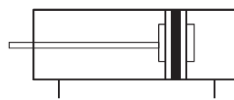
PVIA/PVIAC Series ISO6432 Mini Type Cylinder



PVIA

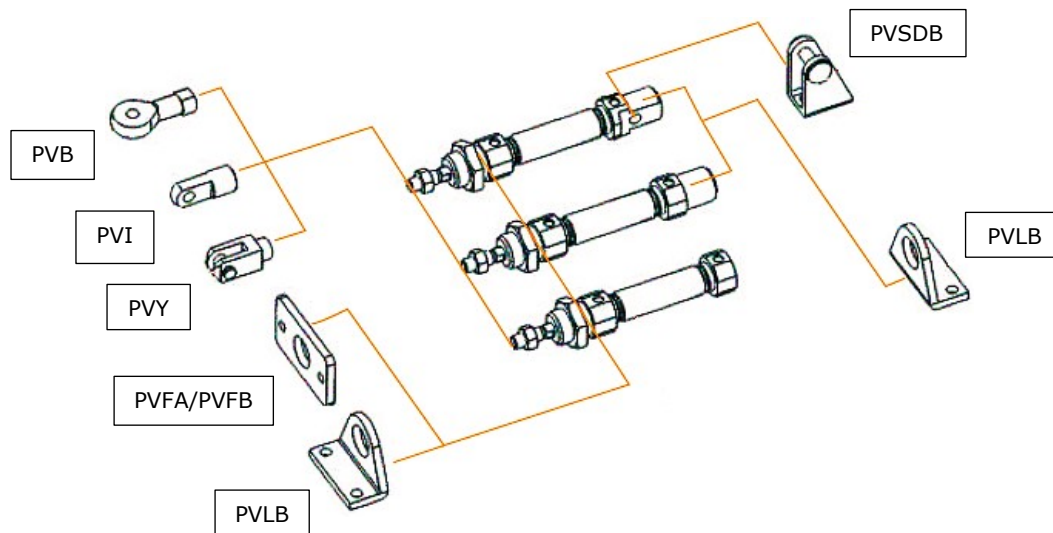


PVIA-S



P	V	I	A	C	8	x	25	-	S	-	
	Series no.			Type No.	Bore		Stroke		Magnet		Tail type
	PVIA			C: Air cushion	8		25		Blank: No magnet		Blank: Swiveling tail
	PVIAC			Blank: Basic type	10		50		S: With magnet		U: Flat tail
					12		75				CM: Round tail
					16		...				
					20						
					25						

Optional Accessories

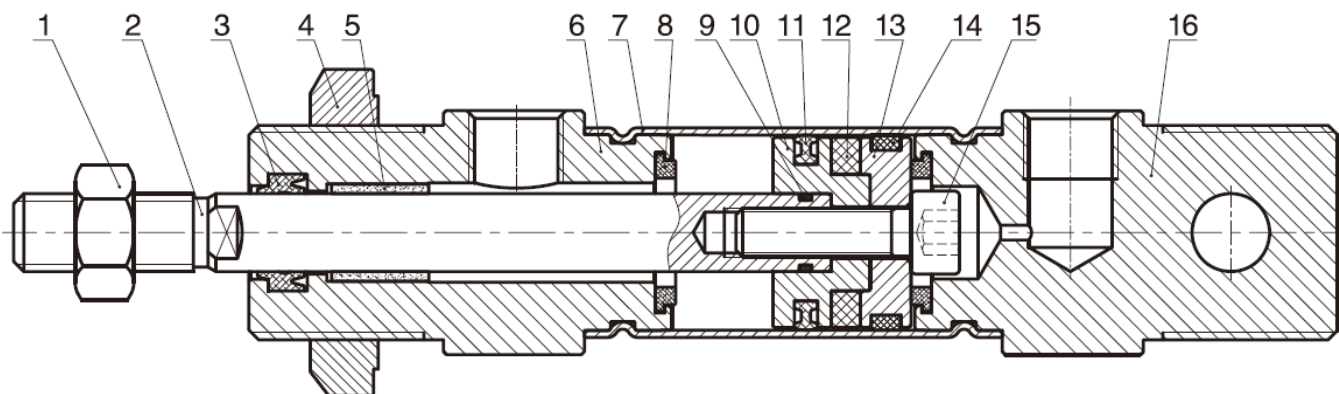


Specifications

Bore size (mm)	8	10	12	16	20	25
Acting type	Single acting / Double acting					
Working medium	Clean air (After 40 µm filtration)					
Working pressure (bar)	2 ~ 7 (Single acting) / 1 ~ 7 (Double acting)				2 ~ 10 (Single acting) / 1 ~ 10 (Double acting)	
Guaranteed pressure (bar)	15					
Working temperature (°C)	-20 ~ 80 (No freezing)					
Speed range (mm/s)	Single acting: 50 ~ 800 Double acting: 30 ~ 800					
Cushion type	Rubber cushion			Rubber cushion (Standard) / Air cushion (Optional)		
Barrel material	Stainless steel					
Mounting type	PVLB PVLA PVSDB					
Port size	M5x0.8				G1/8	

	Bore (mm)	Standard stroke (mm)	Max. stroke (mm)
Single acting	8	10 15 20 25 30 40 50	50
	10	10 15 20 25 30 40 50	50
	12	10 15 20 25 30 40 50	50
	16	10 15 20 25 30 40 50 60 75 80 100	100
	20 ~ 25	10 15 20 25 30 40 50 60 75 80 100 125 150	150
Double acting	8	25 50 75 100 125 150	200
	10	25 50 75 100 125 150 175 200	200
	12	25 50 75 100 125 150 175 200 225 250	500
	16	25 50 75 100 125 150 175 200 225 250 300 350 400 500	500
	20 ~ 25	25 50 75 100 125 150 175 200 225 250 300 350 400 500	800

Internal Structure

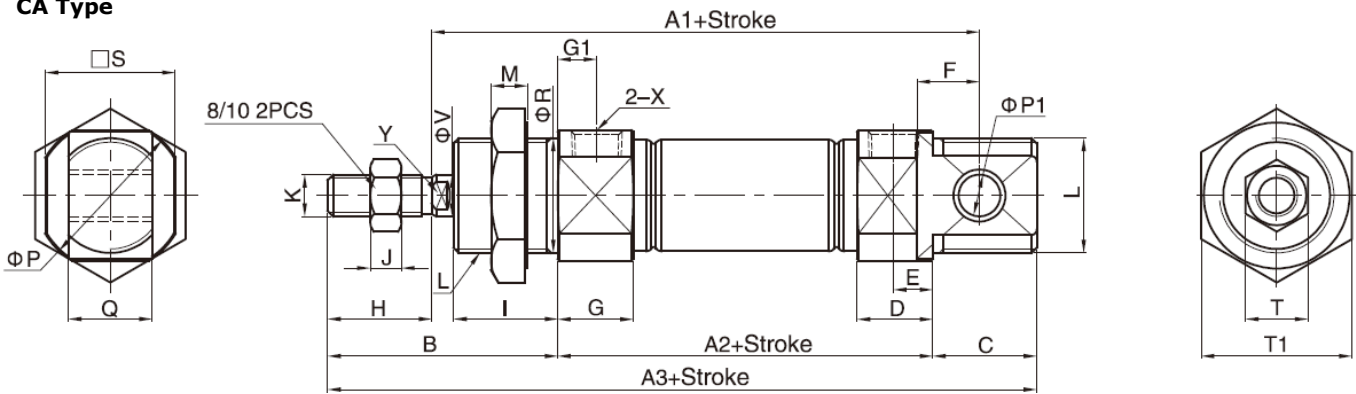


No.	Part name	Material
1	Nut	Carbon steel
2	Piston rod	PVIA8, 10: SUS304 hard chrome carbon steel/ PVIA12 - PVIA25: S45C hard chrome carbon steel
3	Piston rod seal	NBR
4	Nut	Carbon steel
5	Self lubricating bearing	Bronze powder
6	Head cover	Aluminum alloy
7	Barrel	Stainless steel
8	Anti-bump cushion	TPU
9	O-ring	NBR
10	Piston	PVIA8, 10: Stainless steel / PVIA12 - PVIA25: Aluminum alloy
11	Piston seal	NBR
12	Magnet	Plastic
13	Magnet base	PVIA8, 10: Stainless steel / PVIA12 - PVIA25: Aluminum alloy
14	Wear ring	PTFE
15	Hexagon screw	Carbon steel
16	Rear cover	Aluminum alloy

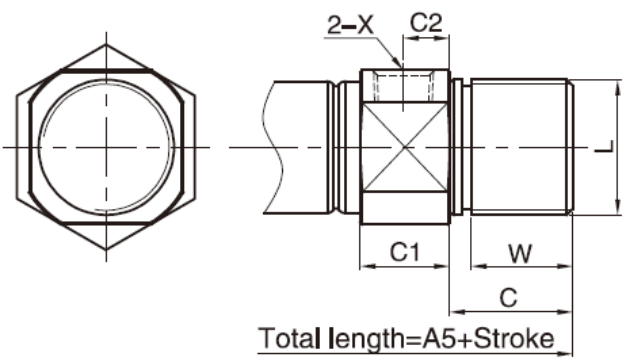
Main Dimension

PVIA $\varnothing 8 - \varnothing 25$

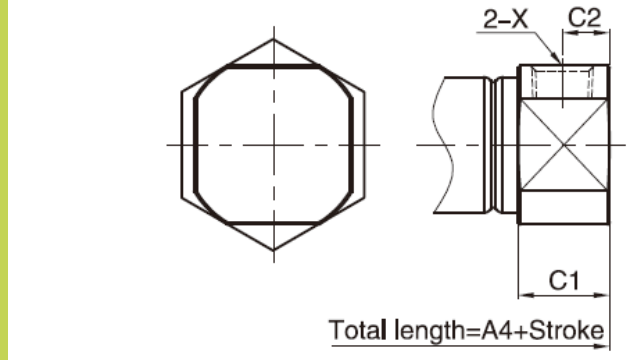
CA Type



CM Type



U Type



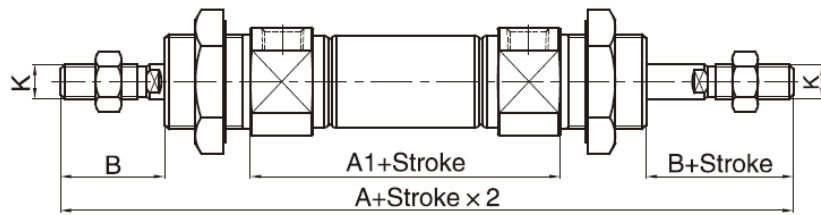
(mm)

Bore	A1	A2	A3	A4	A5	B	C	C1	C2	D	E
8	64	46	86	74	-	28	12	9.5	5	9.5	5.2
10	64	46	86	74	-	28	12	9.5	5	9.5	5.2
12	75	50	105	88	105	38	17	10	5	10	5
16	82	56	111	94	111	38	17	10.5	5.5	10.5	5.5
20	95	62	126	106	126	44	20	14.5	7.5	14.5	7.5
25	104	65	137	115	137	50	22	16	8	16	8

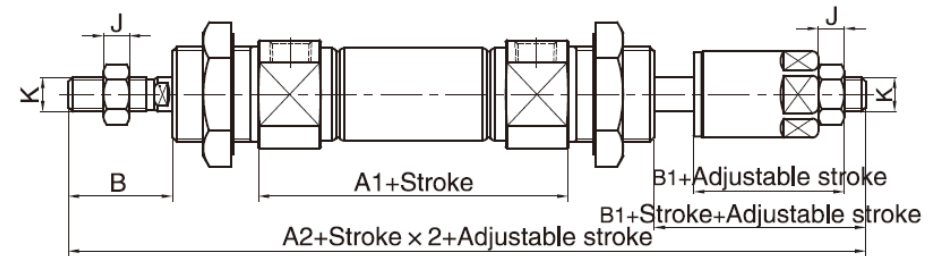
Bore	F	G	G1	H	I	J	K	L	M	P
8	6	11.5	7	12	12	3	M4x0.7	M12x1.25	7	17
10	6	11.5	7	12	12	3	M4x0.7	M12x1.25	7	17
12	9	12	7	16	17	5	M6x1.0	M16x1.5	6	19.7
16	9	12.5	7	16	17	5	M6x1.0	M16x1.5	6	22
20	12	14.5	7.5	20	20	6	M8x1.25	M22x1.5	7	29
25	12	16	8	22	22	6	M10x1.25	M22x1.5	7	33.5

Bore	P1	Q	R	S	T	T1	X	V	W	Y
8	4	8	12	15	7	17	M5x0.8	4	-	-
10	4	8	12	15	7	17	M5x0.8	4	-	-
12	6	12	16	18.3	10	22	M5x0.8	6	15	5
16	6	12	16	20	10	22	M5x0.8	6	15	5
20	8	16	22	25	12	29	1/8"	8	18	6
25	8	16	22	30	17	29	1/8"	10	20	8

PVIAD $\varnothing 8 - \varnothing 25$



PVIAJ $\varnothing 8 - \varnothing 25$

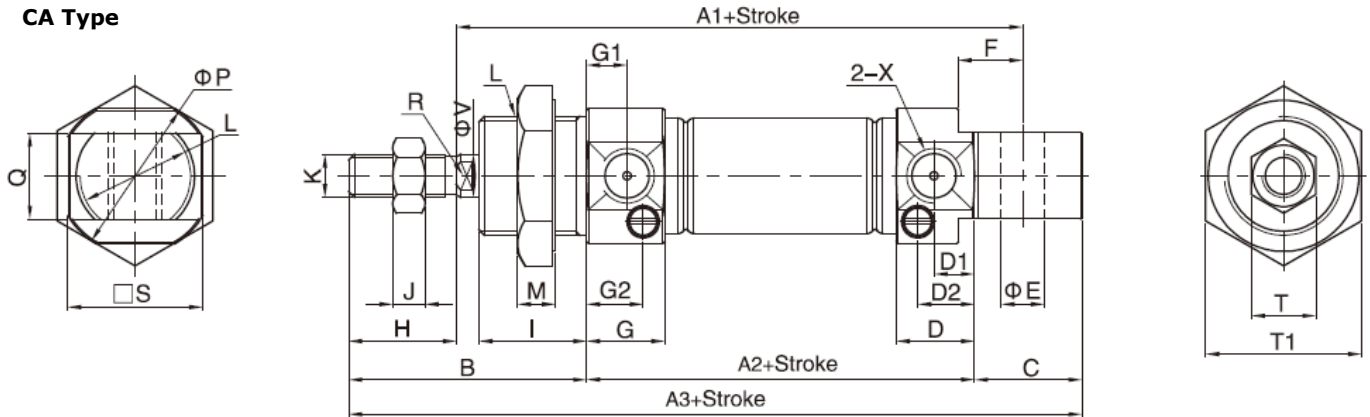


(mm)

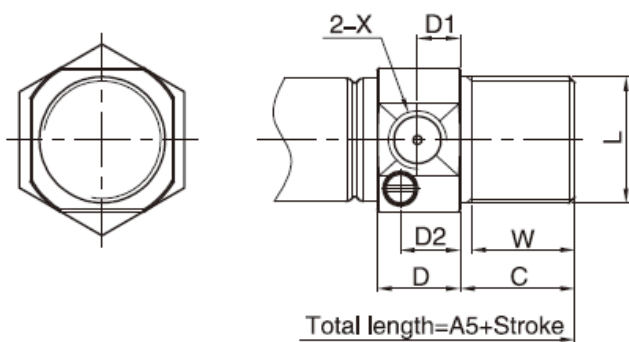
Bore	A	A1	A2	B	B1	J	K
8	104	48	103.5	16	15.5	3	M4x0.7
10	104	48	103.5	16	15.5	3	M4x0.7
12	128	52	128	21	21	5	M6x1.0
16	132.5	56.5	132.5	21	21	5	M6x1.0
20	150	62	151	24	25	6	M8x1.25
25	165	65	164	28	27	6	M10x1.25

PVIAC $\varnothing 16 - \varnothing 25$

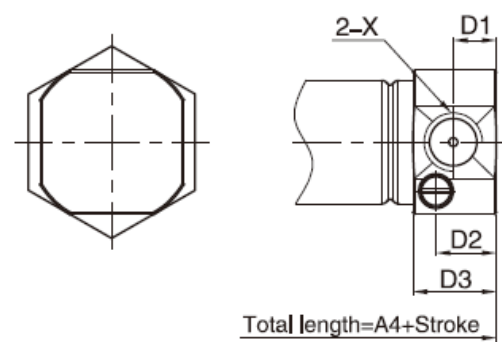
CA Type



CM Type



U Type



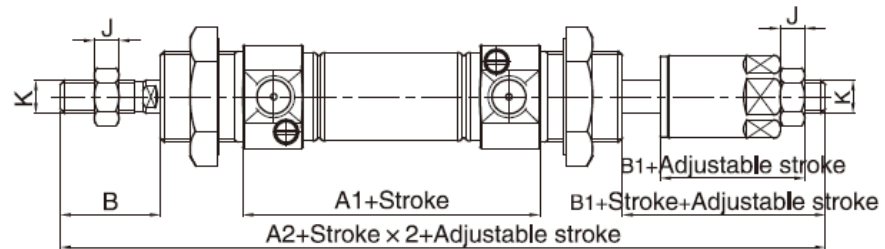
(mm)

Bore	A1	A2	A3	A4	A5	B	C	D	D1	D2	D3
16	82	56	111	94	111	38	17	12	6	9	12
20	95	62	126	106	126	44	20	14.5	7.5	11	14.5
25	104	65	137	115	137	50	22	16	8	12.5	16

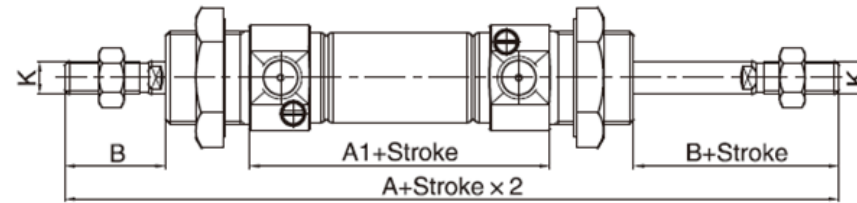
Bore	E	F	G	G1	G2	H	I	J	K	L
16	6	9	12.5	7	9.5	16	17	5	M6x1.0	M16x1.5
20	8	12	14.5	7.5	11	20	20	6	M8x1.25	M22x1.5
25	8	12	16	8	12.5	22	22	6	M10x1.25	M22x1.5

Bore	M	P	Q	R	S	T	T1	X	V	W
16	6	22	12	5	20	10	22	M5x0.8	6	15
20	7	29	16	6	25	12	29	1/8"	8	18
25	7	33.5	16	8	30	17	29	1/8"	10	20

PVIACJ $\varnothing 16 - \varnothing 25$



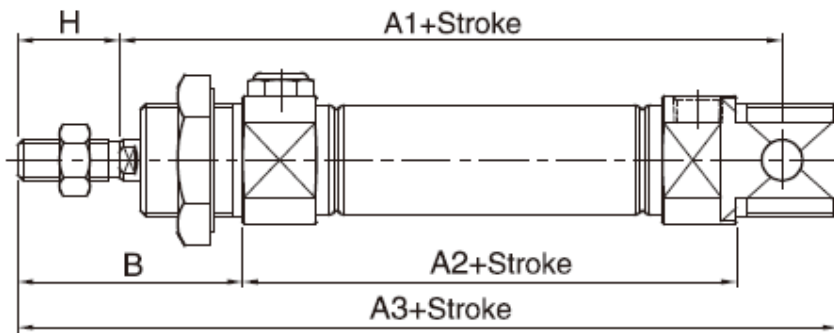
PVIACD $\varnothing 16 - \varnothing 25$



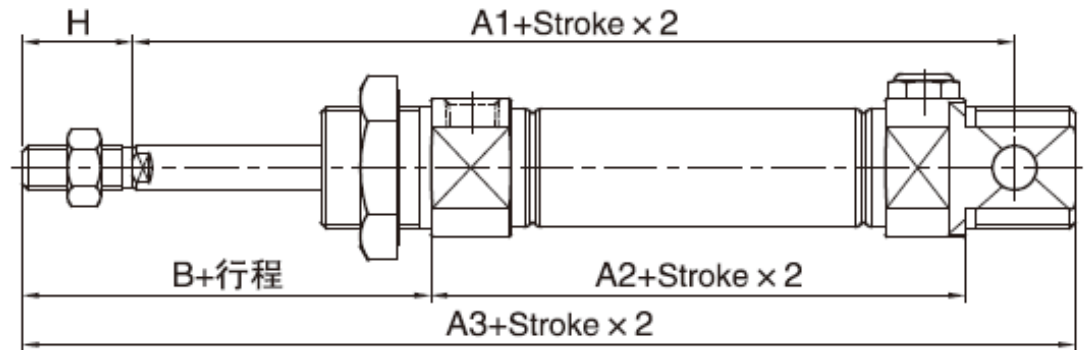
(mm)

Bore	A	A1	A2	B	B1	J	K
16	132.5	56.5	132.5	21	21	5	M6x1.0
20	150	62	151	24	25	6	M8x1.25
25	165	65	164	28	27	6	M10x1.25

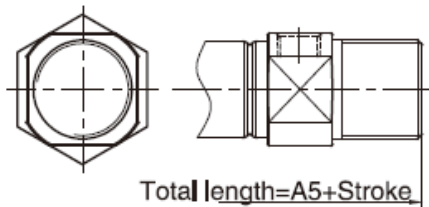
PVIASB $\varnothing 12 - \varnothing 25$



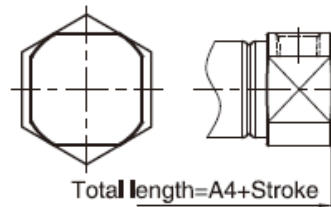
PVIASA $\varnothing 12 - \varnothing 25$



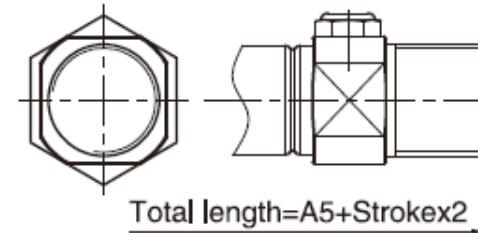
CM Type



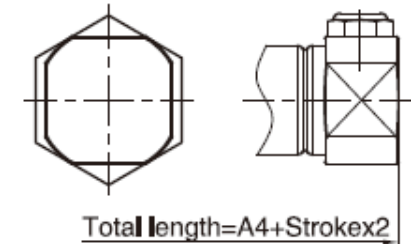
U Type



CM Type



U Type

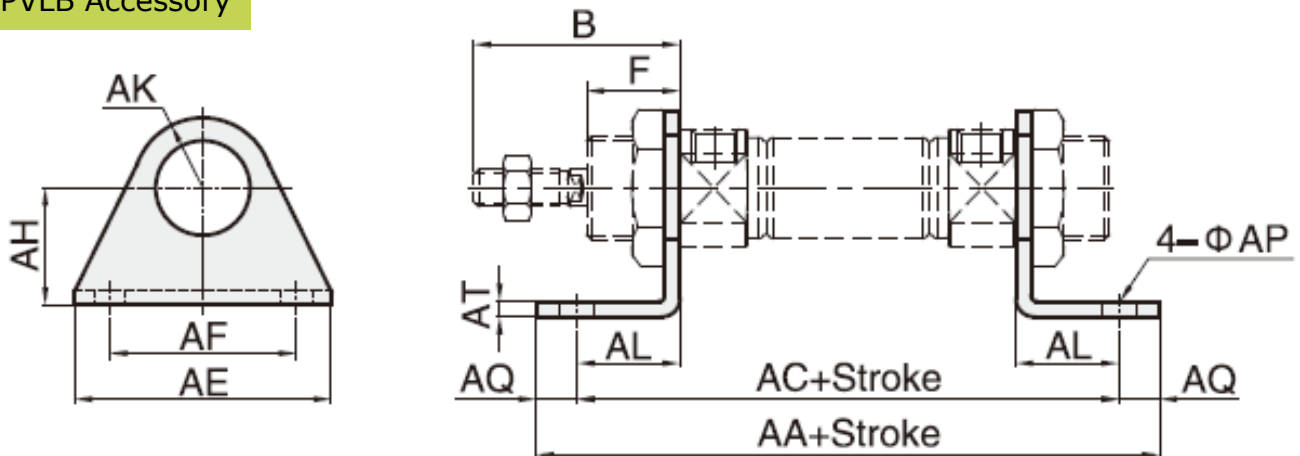


(mm)

Bore	A1			A2			A3			A4			A5			B	H
	0 - 50	51 - 100	101-150	0 - 50	51 - 100	101-150	0 - 50	51 - 100	101-150	0 - 50	51 - 100	101-150	0 - 50	51 - 100	101-150		
12	100	-	-	75	-	-	130	-	-	113	-	-	130	-	-	38	16
16	107	132	-	81	106	-	136	161	-	119	144	-	136	161	-	38	16
20	120	145	170	87	112	137	151	176	201	131	156	181	151	176	201	44	20
25	129	154	179	90	115	140	162	187	212	140	165	190	162	187	212	50	22

Accessory Dimensions

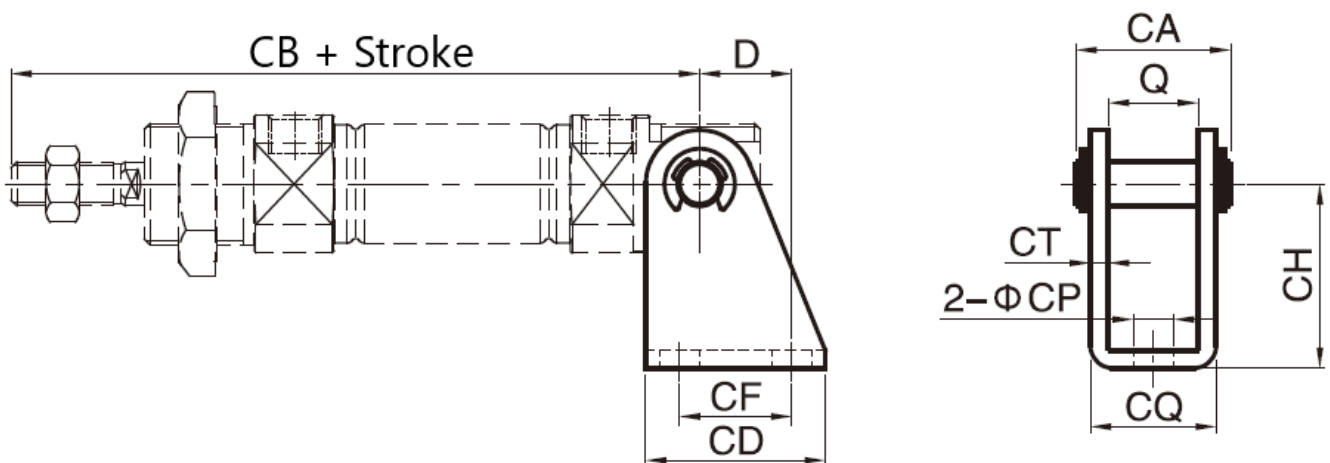
PVLB Accessory



(mm)

Model	AA	AC	AE	AF	AH	AK	AL	AP	AQ	AT	B	F
PVLB-PVIA12	88	76	42	32	20.5	12.5	13	6	6	4	38	17
PVLB-PVIA16	94	82	42	32	20.5	12.5	13	6	6	4	38	17
PVLB-PVIA20	114	98	54	40	22.5	20	18	7	8	4	44	20
PVLB-PVIA25	117	101	54	40	22.5	20	18	7	8	4	50	22

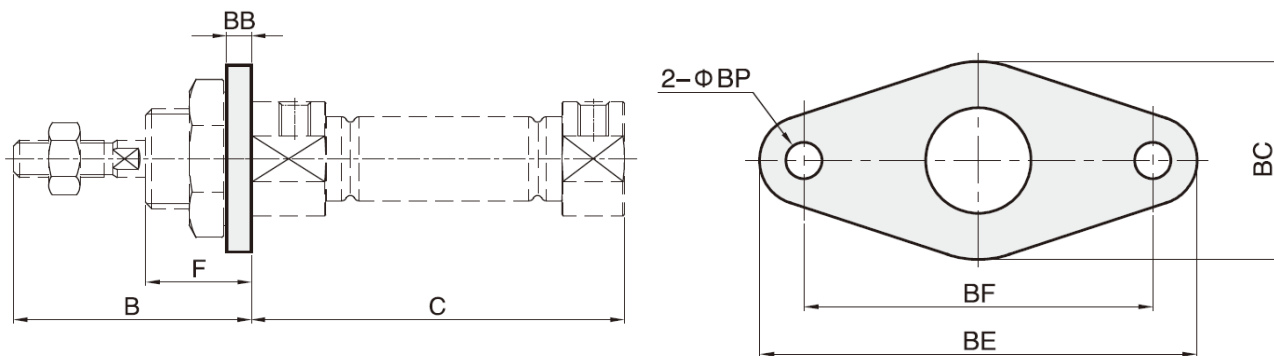
PVSDB Accessory



(mm)

Model	D	Q	CA	CB	CD	CF	CH	CP	CQ	CT
PVLB-PVIA12	13	12.1	21.5	91	25	15	27	5.5	17.1	2.5
PVLB-PVIA16	13	12.1	21.5	98	25	15	27	5.5	17.1	2.5
PVLB-PVIA20	16	16.1	29	115	32	20	30	6.6	24.1	4
PVLB-PVIA25	16	16.1	29	126	32	20	30	6.6	24.1	4

PVFA Accessory



(mm)

Model	B	C	BB	BC	BE	BF	F
PVLB-PVIA12	38	50	4	30	53	40	17
PVLB-PVIA16	38	56	4	30	53	40	17
PVLB-PVIA20	44	62	5	40	66	50	20
PVLB-PVIA25	50	65	5	40	66	50	22